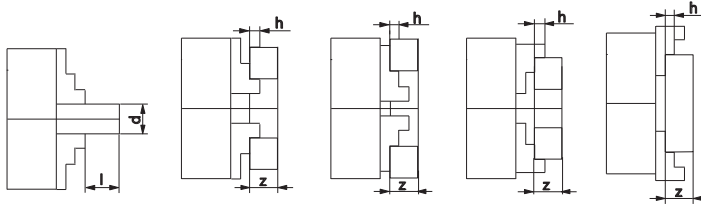


# Technische Daten

## Technical data

### Werkstückparameter / Work piece parameters



| Ø | 80      | 100     | 125     | 160     | 200     | 250     | 315     | 400     | 500     | 630     | 800     |
|---|---------|---------|---------|---------|---------|---------|---------|---------|---------|---------|---------|
| l | 1,2 x d | 1,2 x d | 1,2 x d | 1,2 x d | 1,2 x d | 1,2 x d | 1,5 x d | 1,5 x d | 1,5 x d | 1,0 x d | 1,0 x d |
| z | 4 x h   | 4 x h   | 4 x h   | 4 x h   | 4 x h   | 4 x h   | 4 x h   | 4 x h   | 4 x h   | 4 x h   | 4 x h   |

### Maximale Spannkraft / Total gripping force

| Ø   | 80   | 100  | 125  | 160  | 200  | 250  | 315  | 400  | 500  | 630  | 800  |
|-----|------|------|------|------|------|------|------|------|------|------|------|
| daN | 1000 | 1700 | 2400 | 3100 | 3700 | 4600 | 5500 | 6500 | 7200 | 8000 | 9000 |

### Maximales Anzugsmoment / Maximum torque

| Ø  | 80 | 100 | 125 | 160 | 200 | 250 | 315 | 400 | 500 | 630 | 800 |
|----|----|-----|-----|-----|-----|-----|-----|-----|-----|-----|-----|
| Nm | 35 | 50  | 75  | 120 | 160 | 180 | 200 | 280 | 360 | 460 | 500 |

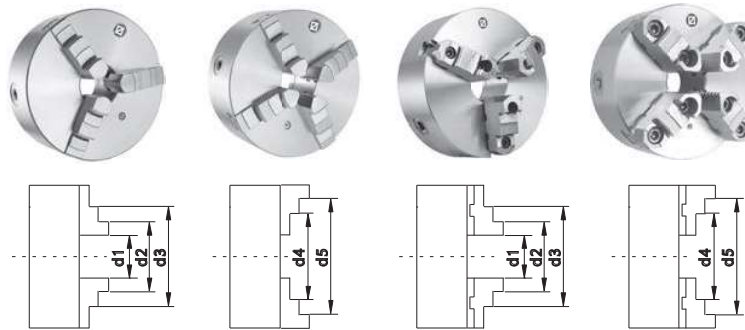
### Maximale Drehzahlen (min<sup>-1</sup>) / Maximum speed (min<sup>-1</sup>)

| Ø   | 80   | 100  | 125  | 160  | 200  | 250  | 315  | 400  | 500  | 630  | 800 |
|---|------|------|------|------|------|------|------|------|------|------|-----|
| Drehfutter Guss /<br>Lathe chucks cast iron | 4000 | 3500 | 3200 | 3000 | 2500 | 2000 | 1500 | 1000 | 700  | 500  | 300 |
| Drehfutter Stahl /<br>Lathe chucks steel    | 6000 | 5200 | 4800 | 4500 | 4000 | 3500 | 2800 | 2000 | 1200 | 1000 | 450 |
| Planscheiben /<br>Independent chucks        | 3000 | 3000 | 2500 | 2000 | 1800 | 1500 | 1200 | 800  | 500  | 400  | 300 |

### Unwucht (Stahl-Drehfutter) / Unbalance (steel body lathe chucks)

| Ø   | 80 | 100 | 125 | 160 | 200 | 250 | 315 | 400 | 500 | 630 | 800 |
|-----|----|-----|-----|-----|-----|-----|-----|-----|-----|-----|-----|
| gcm | 11 | 16  | 23  | 32  | 45  | 63  | 90  | 140 | 300 | 640 | -   |

### Spannbereich / Clamping range



| Ø   | d1      |            | d2      |            | d3 max. |            | d4 max. |            | d5 max. |            |
|-----|---------|------------|---------|------------|---------|------------|---------|------------|---------|------------|
| mm  | solid   | reversible | solid   | reversible | solid   | reversible | solid   | reversible | solid   | reversible |
| 80  | 2-27    | -          | 22-46   | -          | 45-69   | -          | 25-50   | -          | 48-71   | -          |
| 100 | 3-33    | -          | 25-56   | -          | 56-87   | -          | 32-62   | -          | 62-83   | -          |
| 125 | 3-50    | 3-50       | 34-74   | 34-76      | 72-115  | 75-118     | 39-83   | 52-96      | 80-125  | 95-125     |
| 160 | 4-64    | 3-64       | 42-100  | 42-97      | 94-154  | 88-146     | 50-107  | 62-121     | 98-160  | 115-160    |
| 200 | 4-90    | 4-90       | 52-135  | 50-130     | 120-202 | 105-190    | 60-145  | 72-156     | 130-200 | 133-200    |
| 250 | 5-118   | 5-118      | 62-174  | 58-165     | 145-256 | 125-235    | 77-188  | 86-197     | 160-250 | 160-250    |
| 315 | 10-131  | 10-131     | 78-200  | 65-182     | 172-299 | 145-265    | 90-215  | 103-226    | 190-315 | 190-315    |
| 400 | 10-180  | 10-180     | 85-252  | 72-228     | 210-380 | 165-329    | 103-272 | 127-294    | 230-400 | 230-400    |
| 500 | 20-235  | 20-235     | 120-335 | 120-410    | 245-476 | 200-485    | 140-357 | 110-400    | 276-500 | 190-500    |
| 630 | 30-335  | 30-335     | 160-465 | 140-590    | 325-630 | 210-665    | 180-487 | 120-570    | 345-630 | 200-630    |
| 800 | 150-482 | 150-482    | 282-614 | 252-736    | 448-780 | 328-812    | 302-634 | 240-724    | 468-800 | 316-800    |

